



DRURY PLAZA HOTEL ORLANDO | DISNEY SPRINGS® AREA

2000 Hotel Plaza Boulevard, Lake Buena Vista, FL 32830

Conveniently located within the *Disney Springs®* Resort Area, the Drury Plaza Hotel is an *Official Walt Disney World®* Hotel offering flexible spaces to host your next meeting. Our best-in-class amenities and meeting spaces can be customized amidst the magic and wonder of a Disney experience. Simply provide our award-winning team with the details and let us give you the personal attention and planning you deserve.

ROOM TYPES

602 spacious guestrooms & two-room suites

- 177 deluxe king rooms
- 347 deluxe double queen rooms
- 78 deluxe two-room suites

MEETING SPACE

10 total meeting rooms plus prefunction space
17,000+ sq ft of flexible meeting & prefunction space

AMENITIES



Free
Hot Breakfast



Free
5:30 Kickback®

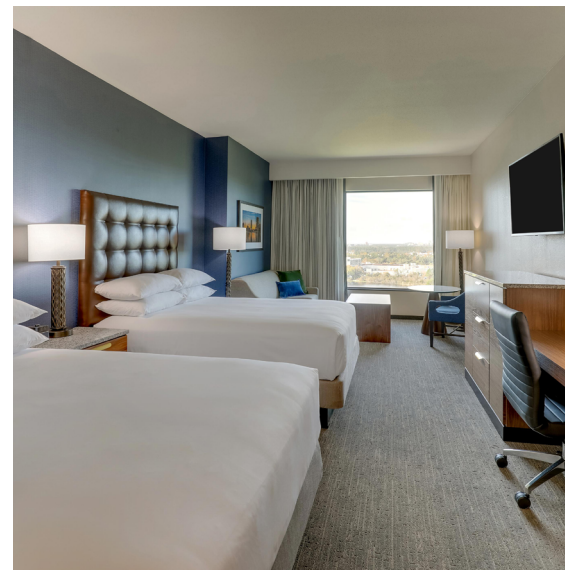
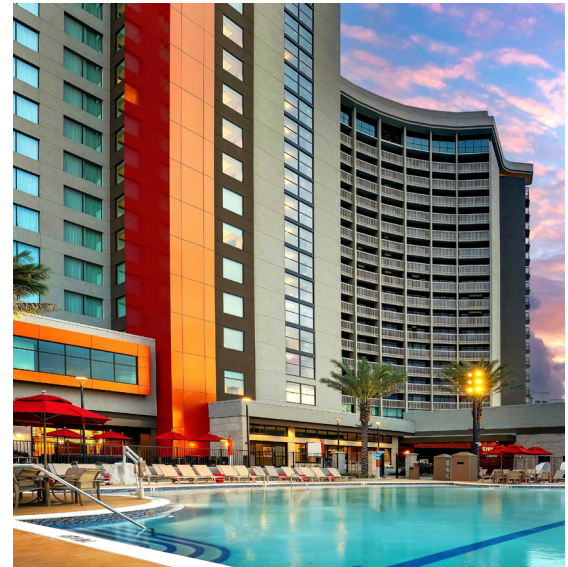


Free
Wi-Fi

The Kitchen + Bar - *Open late, every night*
Lakeside Bar + Grill - *Poolside restaurant*
Market Place - *Including Pizza Hut Express® & Starbucks® Coffee*
24-hour business & fitness centers
Resort-style saltwater pool & splash pad
Microwave & refrigerator in every room
Drury Rewards® loyalty program
Complimentary shuttle service

PARKING

On-site parking available for a nightly fee



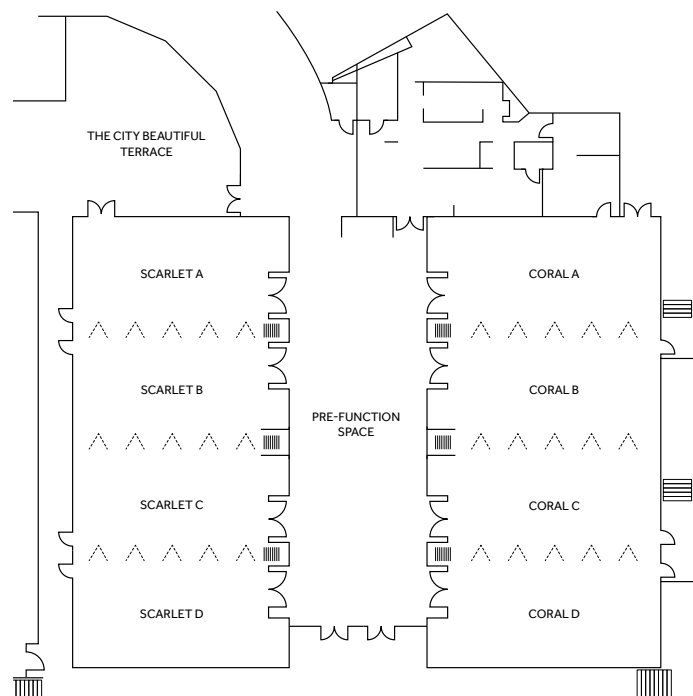
Drury Plaza Hotel Orlando Located in the *Disney Springs*® Area

Capacities & Dimensions

Meeting Room	Dimensions	Ceiling Height	Sq Ft	Maximum Capacity	Banquet	Conference	Theater	Classroom	U-Shape
Scarlet Ballroom	96' x 45'	12.3'	4,272	474	355		474	178	122
Scarlet A	24' x 45'	12.3'	1,080	120	90	26	120	45	31
Scarlet B	24' x 45'	12.3'	1,080	120	90	26	120	45	31
Scarlet C	24' x 45'	12.3'	1,080	120	90	26	120	45	31
Scarlet D	24' x 45'	12.3'	1,080	120	90	26	120	45	31
Coral Ballroom	96' x 49'	12.3'	4,656	517	387		517	194	133
Coral A	24' x 49'	12.3'	1,176	131	98	28	131	49	34
Coral B	24' x 49'	12.3'	1,176	131	98	28	131	49	34
Coral C	24' x 49'	12.3'	1,176	131	98	28	131	49	34
Coral D	23' x 49'	12.3'	1,176	131	98	28	131	49	34
The City Beautiful Terrace	42' x 35'	12'	1,290	107	107				
Pre-Function Space	88' x 32'	15'	2,816						
The Commons - 2nd Floor	130 x 40	12'	5,200		505				

For more information, please contact:

druryplazaorlandosales@druryhotels.com



Drury Plaza Hotel Orlando Located in the Disney Springs® Area

Break Packages

We offer all-day beverage service, as well as AM or PM breaks, so your meeting never runs out of steam.

No food & beverage minimum is required.

Beverage Breaks

All day service - will refresh as needed; 10 person minimum.

- Deluxe**

\$13 / person

"Standard" and "Basic" packages (no bulk iced tea), plus...

 - Premium Bottled Water/Sparkling Water
 - Assorted/Herbal Teas
- Standard**

\$11 / person

"Basic" package, plus...

 - Assorted Soda Cans
 - Bottled Water
- Basic**

\$8 / person

 - Regular/Decaf Coffee & Hot Tea
 - Iced Tea (bulk) and Infused Water (bulk)

Recharge Food Breaks

Pricing valid with purchase of Beverage Break; 45 minute service; 10 person minimum; select items may have a per person upcharge as indicated (*).

- Sweet & Savory**

\$14 / person

Mix & match up to four (4) selections from our "Sweet" or "Savory" list.
Additional selections \$2 / person.
- Sweet Only**

\$9 / person

Mix & match two (2) selections from our "Sweet" list.
Additional selections \$2 / person.
- Savory Only**

\$9 / person

Mix & match two (2) selections from our "Savory" list.
Additional selections \$2 / person.

Other Food Options

- Drury's Hot Breakfast**

\$10.99 / person

A variety of hot food options, cereal, pastries, bagels and more.
Served daily - 6:00 - 9:30 am Monday - Friday & 7:00 - 10:00 am Saturday & Sunday - in the main dining area only.
- Drury's 5:30 Kickback®**

\$12.99 / person

Rotating menu of hot food options, hearty soups, healthy salads and more.
Served nightly - 5:30 - 7:00 pm - in the main dining area only.
Alcoholic beverages not included for non-hotel guests.

Prices are subject to change and are exclusive of service charge and local sales tax.

A La Carte Beverages

Add. Cost

- ☐ Coffee - 1.5 gal. (regular or decaf) \$40
- ☐ Energy Drinks (i.e. Red Bull) (ea) \$5
- ☐ Premium or Sparkling Bottled Water (ea) \$5
- ☐ Black & Herbal Tea with Hot Water (ea) \$3
- ☐ Soda/Juice/Water (by the can/bottle) (ea) \$3

Sweet Selections

Add. Cost

- ☐ Greek Yogurt Cups \$1
- ☐ Ice Cream \$1
- ☐ Premium "Power" Bars \$1
- ☐ Candy Bars/Gummi Bears -
- ☐ Cookies/Brownies -
- ☐ Fresh Fruit -
- ☐ Granola Bars/Cereal Bars -
- ☐ Mini Pastry/Danish/Muffins -
- ☐ Rice Krispy Treats -
- ☐ Yogurt Cups -

* other options may be available upon request

Savory Selections

Add. Cost

- ☐ Guacamole with Chips \$2
- ☐ Jerky \$2
- ☐ Hummus with Pita Chips \$1
- ☐ Hard Boiled Eggs -
- ☐ Kettle Potato Chips -
- ☐ Popcorn -
- ☐ Pretzels -
- ☐ Salsa with Chips -
- ☐ Trail Mix -

* other options may be available upon request

Drury Plaza Hotel Orlando Located in the *Disney Springs*® Area

Catering Options

Below is a list of our preferred catering vendors.

Table Top Catering

TableTopCatering.com

P 407-710-8671

We are a full-service caterer that is committed to providing every event with exemplary service, fresh seasonally driven foods, and creative and unique displays. Whether it's lunch for 25 at your home or office, or a gala for 2,000 in a ballroom, Table Top Catering has the experience and dedication to excellence to ensure your event is a complete success.

Audio-Visual Equipment*

Drury Hotels proudly offers a selection of onsite audio-visual equipment available to rent. If your audio-visual request cannot be accommodated using our onsite equipment, our National Group Sales Coordinators can assist in obtaining the additional equipment for your meeting.

ITEM	PRICE
▣ High-Speed Wi-Fi	FREE
▣ Charging Station	FREE
▣ Projection Screen	FREE
▣ Hybrid Meeting Package	call for details
▣ LCD Projector	\$150.00
▣ Wireless Lapel or Handheld Microphone	\$100.00
▣ Polycom Speaker Phone	\$50.00
▣ Flipchart with Easel & Markers	\$20.00
▣ 47" TV, DVD Player	\$50.00
▣ Powerstrips/Extension Cords	\$15.00 / per

** For the convenience of meeting planners, groups may bring their own audio visual equipment if desired. If the group requires equipment not carried by the hotel, equipment will be ordered from an approved local AV supplier and the customer will be billed the suppliers price through the hotel on the Banquet Event Order. AV equipment and pricing are subject to change. Please contact us at 504-380-8326 for complete details.*

All AV equipment includes an extension cord and powerstrip. Pricing and available equipment are subject to change. Listed AV is priced per day and is exclusive of tax.