

Drury Plaza Hotel in Santa Fe

DRURY PLAZA HOTEL IN SANTA FE

828 Paseo de Peralta, Santa Fe, NM 87501

Our team is ready to deliver prompt, personalized service to ensure your event will make a big impact. Customize your meeting with flexible catering and audio-visual options, and enjoy affordable pricing without hidden fees.

MEETING SPACE

- 8 total meeting rooms plus prefunction space
- 21,000+ sq ft of flexible meeting room space
- Accommodates up to 300 in largest capacity space

ROOM TYPES

- 182 spacious guestrooms & two-room suites
- 111 deluxe king rooms
- 58 deluxe double queen rooms
- 13 deluxe two-room suites

AMENITIES



Free
Hot Breakfast



Free
5:30 Kickback®



Free
Wi-Fi

The Kitchen + Bar - *Open late, every night*
 Roof Top Bar
 24-hour business & fitness centers
 Heated outdoor rooftop pool & whirlpool
 Guest market available
 Guest laundry & same day dry cleaning (Mon - Fri) available
 Microwave & refrigerator in every room
 Drury Rewards® loyalty program

PARKING

On-site valet parking available for a nightly fee

**FOR MORE INFORMATION ON PLANNING YOUR NEXT EVENT,
PLEASE CONTACT OUR SALES TEAM AT:**

E Groups@DruryHotels.com

P 800-436-1169



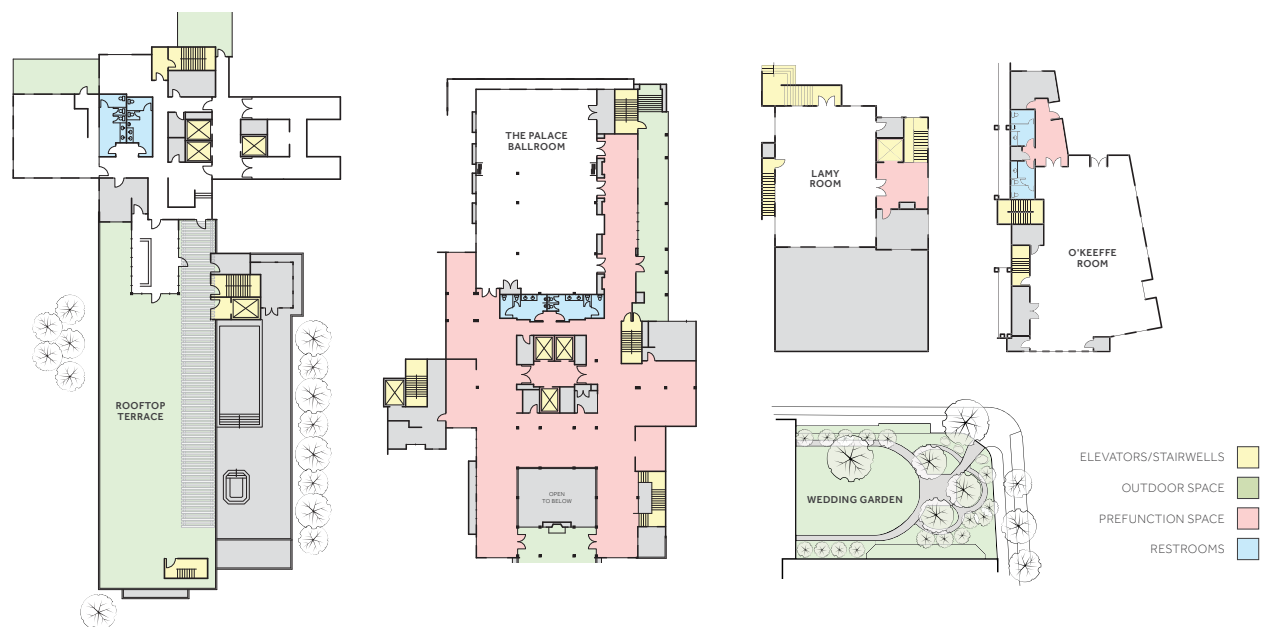
Drury Plaza Hotel in Santa Fe

Capacities & Dimensions*

We offer a variety of customizable set-up options to make your next event a success.

Meeting Room	Dimensions	Sq Ft	Banquet Capacity	Crescent Rounds	Conference Capacity	Theater Capacity	Classroom Capacity	U-Shape Capacity
Rivera A	21' x 42'	882	40	20	30	49	40	24
Rivera B	21' x 42'	882	40	20	30	49	40	24
Rivera A/B	42' x 42'	1,764	80	40	—	120	—	—
Foyer	11' x 75'	792	—	—	—	—	—	—
Palace Ballroom A	47' x 50'	2,350	152	70	40	220	78	45
Palace Ballroom B	47' x 30'	1,410	80	30	30	100	54	—
Palace Ballroom	47' x 80'	3,760	232	116	70	300	150	55
Lamy	32' x 47'	1,504	120	60	50	150	92	60
Meem	22' x 30'	660	40	30	25	70	54	30
Garden	70' x 84'	5,880	240	120	—	300	—	—
Rooftop Terrace	31' x 112'	3,472	152	—	—	204	—	—
Mountain View Terrace	26' x 23'	598	24	—	—	35	—	—
Boardroom	15' x 24'	343	—	—	15	—	—	—
O'Keeffe	34' x 88'	3,000	200	80	42	300	153	54

* Capacities can vary based on room set up, audio/visual needs, staging and dance floor. ** O'Keeffe round tables seat 12



Drury Plaza Hotel in Santa Fe

Catering Options

Below is a list of our preferred catering vendor

Masterpiece Cuisine

MasterpieceCuisine.com

P 702.463.0450 **E** sales@masterpiececuisine.com

Whether it is a large-scale meeting, an intimate event or a personalized wedding, our Culinary Team uses their skills to create a unique and memorable dining experience with global cuisine and culture as our inspiration.

Audio-Visual Equipment

Complimentary high-speed Wi-Fi is available in all meeting rooms. Our AV partner can provide any required equipment not listed below. Let our team of experts help you determine your unique technology needs to meet the goals of your event.

ITEM	PRICE
□ High-Speed Wi-Fi	FREE
□ Charging Station	FREE
□ Hybrid Meeting Package	call for details
□ LCD Support Package	
□ LCD Projector & Screen	\$475.00 / day
□ AV Cart, Power Strip, VGA or HDMI Cord	
□ Sound Package	
□ Microphone	\$150.00 / day
□ House Sound Patch	
□ Access to Sound System	
□ LCD Projector & House Sound Package	
□ LCD Projector & Screen	
□ AV Cart, Power Strip, VGA or HDMI Cord	\$600.00 / day
□ Microphone	
□ Access to Sound System	
□ House Sound Patch	
□ Standing Presentation Package	
□ Standing Podium	\$90.00 / day
□ Portable Dry-Erase Board w/ Markers or Flip Chart, Easel	
□ Power Strip	
□ Seated Presentation Package	
□ Table Top Podium	\$60.00 / day
□ Portable Dry-Erase Board w/ Markers or Flip Chart, Easel	
□ Power Strip	
□ 47" TV, DVD Player, Power Strip	\$200.00 / day
□ Support Package	
□ AV Cart (skirted), Power Strip, Extension Cord	\$60.00 / day
□ Screen	
□ Dance Floor (4' x 4' ft squares) - Max Area of 20' x 24' ft	\$25.00/per square
□ Stage (8' x 6' sections) - Max Area of 4 Sections	\$125.00/per section
□ Outdoor Heaters	\$100.00

Drury Plaza Hotel in Santa Fe

Audio-Visual Equipment* - A La Carte

Listed A/V is priced per day and is exclusive of tax and gratuity.

ITEM	PRICE
□ LCD Projectors	\$400.00
□ Sound System w/ (2) Powered Speakers	\$150.00
□ DVD Players	\$75.00
□ Lavalier Microphones	\$115.00
□ Wireless Microphones	\$115.00
□ Wired Microphones	\$90.00
□ 4 Channel Audio Mixer	\$50.00
□ Microphone Stands	\$15.00
□ Microphone Stands - Table Top	\$15.00
□ Podium - Table Top	\$30.00
□ Podium - No Microphone	\$50.00
□ Polycom Speaker Phones	\$100.00
□ AV Carts with Power Strip	\$30.00
□ Pop Up Screens (87" x 49")	\$75.00
□ Easels - Display	\$10.00
□ Power Strips (Qty: 1-5)	\$20.00
□ Power Strips (6+)	\$15.00
□ Flip Charts/Dry Erase Board	\$40.00
□ Laser Pointer	\$20.00
□ A/V Cables & Cords	\$25.00 for any (3) - \$10 per additional
□ Auxiliary Cords (25 ft), HDMI Cables (6ft/4 ftw), XLR Converter Cables, LTIBLOX Cords, Fire Wire for MACs, VGA Cables (25 ft), VGA Splitter, DVI Adapter for MAC, Ethernet Splitters, Power Cords, Microphone Cords	

* For the convenience of meeting planners, groups may bring their own audio visual equipment if desired. If the group requires equipment not carried by the hotel, equipment will be ordered from an approved local AV supplier and the customer will be billed the suppliers price through the hotel on the Banquet Event Order. AV equipment and pricing are subject to change. Please contact our Group Sales Department at 1-800-436-1169 for complete details.

All AV equipment includes an extension cord and powerstrip. Pricing and available equipment are subject to change.