

Drury Plaza Hotel in Santa Fe

DRURY PLAZA HOTEL IN SANTA FE

828 Paseo de Peralta, Santa Fe, NM 87501

Our team is ready to deliver prompt, personalized service to ensure your event will make a big impact. Experience *Meetings with More* value featuring free Wi-Fi in meeting rooms, no food and beverage minimums, flexible cancellation policies, and our best-in-class free amenities for hotel guests.

MEETING SPACE

8 total meeting rooms

- 11,000+ sq ft of meeting space
- Accommodates up to 300 in largest capacity space

ROOM TYPES

182 spacious guestrooms & two-room suites

- 111 deluxe king rooms
- 58 deluxe double queen rooms
- 13 deluxe two-room suites

AMENITIES



Free
Hot Breakfast



Free
5:30 Kickback®



Free
Wi-Fi

24-hour business & fitness centers
Heated outdoor rooftop pool & whirlpool
The Kitchen + Bar - Open late, every night
The Rooftop at the Plaza restaurant & bar
Guest market available
Guest laundry & same day dry cleaning (Mon - Fri) available
Microwave & refrigerator in every room
Drury Rewards® loyalty program

PARKING

On-site parking available for a nightly fee

**FOR MORE INFORMATION ON PLANNING YOUR NEXT EVENT,
PLEASE CONTACT OUR SALES TEAM AT:**

E Groups@DruryHotels.com

P 800-436-1169



Drury Plaza Hotel in Santa Fe

Capacities & Dimensions*

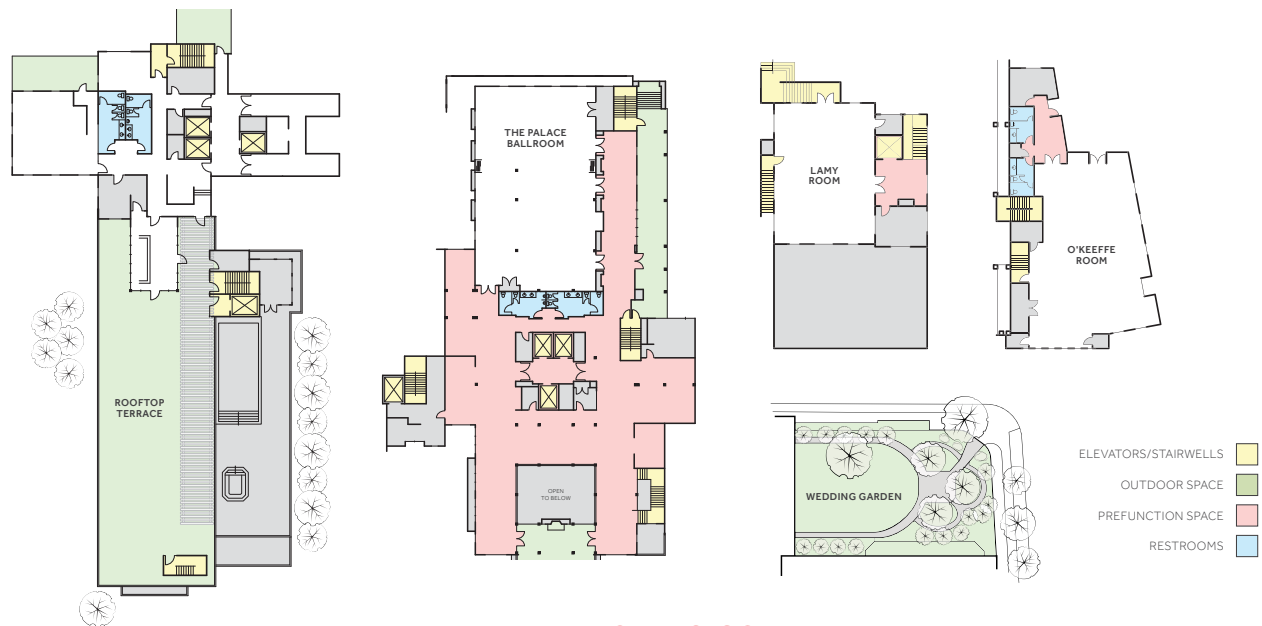
We offer a variety of customizable set-up options to make your next event a success.

Meeting Room	Dimensions	Sq Ft	Banquet Capacity	Conference Capacity	Theater Capacity	Classroom Capacity	U-Shape Capacity
Rivera A/B	42' x 42'	1,764	88	—	120	—	—
Rivera A	21' x 42'	882	48	30	49	40	24
Rivera B	21' x 42'	882	49	30	49	40	24
Foyer	11' x 75'	792	—	—	—	—	—
Palace Ballroom	47' x 80'	3,760	232	70	300	150	55
Palace Ballroom A	47' x 50'	2,350	152	40	220	78	45
Palace Ballroom B	47' x 30'	1,410	80	30	100	54	—
Lamy	32' x 47'	1,504	120	50	150	92	60
Meem	22' x 30'	660	40	25	70	54	30
Garden	70' x 84'	5,880	240	—	300	—	—
Rooftop Terrace	31' x 112'	3,472	152	—	204	—	—
Mountain View Terrace	26' x 23'	598	24	—	35	—	—
Boardroom	15' x 24'	343	—	15	—	—	—
O'Keeffe	34' x 88'	3,000	192	42	300	153	54

* Capacities can vary based on room set up, audio/visual needs, staging and dance floor.

** O'Keeffe round tables seat 12.

*** 11,000 sq ft of meeting room space. 21,000 sq ft of flexible space.



Drury Plaza Hotel in Santa Fe

Break Packages

We offer all-day beverage service, as well as AM or PM breaks, so your meeting never runs out of steam.

No food & beverage minimum is required.

Beverage Breaks

All-day service - will refresh as needed; 10 person minimum.

- **Deluxe** **\$17 / person**
"Standard" and "Basic" packages (no carafes of iced tea), plus...
 - Premium Bottled Water/Sparkling Water
 - Assorted/Herbal Teas
- **Standard** **\$14 / person**
"Basic" package, plus...
 - Assorted Soda Cans
 - Bottled Water
- **Basic** **\$12 / person**
 - Regular/Decaf Coffee & Hot Tea
 - Carafes of Iced Tea and Infused Water

Recharge Food Breaks

Pricing valid with purchase of Beverage Break; 45 minute service; 10 person minimum; select items may have a per person upcharge as indicated (*).

- **Sweet & Savory** **\$18 / person**
 Mix & match up to four (4) selections from our "Sweet" or "Savory" list.
Additional selections \$2 / person.
- **Sweet Only** **\$12 / person**
 Mix & match two (2) selections from our "Sweet" list.
Additional selections \$2 / person.
- **Savory Only** **\$12 / person**
 Mix & match two (2) selections from our "Savory" list.
Additional selections \$2 / person.

Other Food Options

- **Drury's Hot Breakfast** **\$10.99 / person**
 A variety of hot food options, cereal, pastries, bagels and more.
 Served daily - 6:00 - 9:30 am Monday - Friday & 7:00 - 10:00 am Saturday & Sunday - in the main dining area only.
- **Drury's 5:30 Kickback®** **\$12.99 / person**
 Rotating menu of hot food options, hearty soups, healthy salads and more.
 Served nightly - 5:30 - 7:00 pm - in the main dining area only.
Alcoholic beverages not included for non-hotel guests.

Prices are subject to change and are exclusive of service charge and local sales tax.

A La Carte Beverages

Add. Cost

- Coffee - 1.5 gal. (regular or decaf) \$54
- Energy Drinks (i.e. Red Bull) (ea) \$6
- Premium or Sparkling Bottled Water (ea) \$5
- Black & Herbal Tea with Hot Water (ea) \$3
- Soda/Water (by the can/bottle) (ea) \$3

Sweet Selections

Add. Cost

- Greek Yogurt Cups \$3
- Ice Cream \$3
- Premium "Power" Bars \$3
- Candy Bars -
- Cookies -
- Brownies -
- Whole Fresh Fruit -
- Granola Bars/Cereal Bars -
- Mini Pastries -
- Danishes -
- Muffins -
- Rice Krispy Treats -
- Yogurt Cups -

** other options may be available upon request*

Savory Selections

Add. Cost

- Guacamole with Chips \$3
- Jerky \$3
- Hummus with Pita Chips \$2
- Trail Mix \$2
- Hard Boiled Eggs -
- Kettle Potato Chips -
- Smartfood® White Cheddar Popcorn -
- Rold Gold® Pretzels -
- Salsa with Chips -

** other options may be available upon request*

Drury Plaza Hotel in Santa Fe

Catering Options

Below is a list of our preferred catering vendors.

Masterpiece Cuisine

MasterpieceCuisine.com

P 702-463-0450

E sales@masterpiececuisine.com

Whether it is a large-scale meeting, an intimate event or a personalized wedding, our Culinary Team uses their skills to create a unique and memorable dining experience with global cuisine and culture as our inspiration.

Drury Plaza Hotel in Santa Fe

Audio-Visual Equipment

Complimentary high-speed Wi-Fi is available in all meeting rooms. Our AV partner can provide any required equipment not listed below. Let our team of experts help you determine your unique technology needs to meet the goals of your event.

ITEM	PRICE
□ High-Speed Wi-Fi	FREE
□ Charging Station	FREE
□ LCD Support Package	
□ LCD Projector & Screen	\$500 / day
□ AV Cart, Power Strip, VGA or HDMI Cord	
□ Sound Package	
□ Microphone	\$150
□ House Sound Patch	
□ Access to Sound System	
□ LCD Projector & House Sound Package	
□ LCD Projector & Screen	
□ AV Cart, Power Strip, VGA or HDMI Cord	
□ Microphone	\$600
□ Access to Sound System	
□ House Sound Patch	
□ Standing Presentation Package	
□ Standing Podium	\$90
□ Portable Dry-Erase Board w/ Markers or Flip Chart, Easel	
□ Power Strip	
□ Seated Presentation Package	
□ Table Top Podium	\$60
□ Portable Dry-Erase Board w/ Markers or Flip Chart, Easel	
□ Power Strip	
□ 47" TV, DVD Player, Power Strip	\$200
□ Support Package	
□ AV Cart (skirted), Power Strip, Extension Cord	\$60
□ Screen	
□ Dance Floor (4' x 4' ft squares) - Max Area of 20' x 24' ft	\$30 / per square
□ Stage (8' x 6' sections) - Max Area of 4 Sections	\$125 / per section
□ Outdoor Heaters	\$100

Drury Plaza Hotel in Santa Fe

Audio-Visual Equipment* - A La Carte

ITEM	PRICE
□ Garden Chairs	\$4 / each
□ LCD Projectors	\$400
□ Sound System w/ (2) Powered Speakers	\$150
□ Drop Down Screens	\$100
□ DVD Players	\$75
□ Lavalier Microphones	\$125
□ Wireless Microphones	\$125
□ Wired Microphones	\$100
□ Microphone Stands	\$15
□ Microphone Stands - Table Top	\$15
□ Podium - Table Top	\$30
□ Podium - No Microphone	\$50
□ Polycom Speaker Phones	\$100
□ AV Carts with Power Strip	\$45
□ Pop Up Screens (87" x 49")	\$75
□ Easels - Display	\$10
□ Power Strips (Qty: 1-5)	\$20
□ Power Towers	\$30 / each
□ Power Strips (6+)	\$15
□ Flip Charts/Dry Erase Board	\$40
□ Laser Pointer	\$20
□ A/V Cables & Cords	\$25 for any (3) - \$10 per additional
<ul style="list-style-type: none"> □ Auxillary Cords (25 ft), HDMI Cables (6ft/4 ftw), XLR Converter Cables, LTIBLOX Cords, Fire Wire for MACs, VGA Cables (25 ft), VGA Splitter, DVI Adapter for MAC, Ethernet Splitters, Power Cords, Microphone Cords 	

* For the convenience of meeting planners, groups may bring their own audio visual equipment if desired. If the group requires equipment not carried by the hotel, equipment will be ordered from an approved local AV supplier and the customer will be billed the suppliers price through the hotel on the Banquet Event Order. AV equipment and pricing are subject to change. Please contact our Group Sales Department at 1-800-436-1169 for complete details.

All AV equipment includes an extension cord and powerstrip. Pricing and available equipment are subject to change. Listed AV is priced per day and is exclusive of tax and gratuity.