

Drury Plaza Hotel St. Louis Brentwood

DRURY PLAZA HOTEL ST. LOUIS | BRENTWOOD

8700 Eager Road, Brentwood, MO 63144

Our team is ready to deliver prompt, personalized service to ensure your event will make a big impact. Experience *Meetings with More* value featuring free Wi-Fi in meeting rooms, no food and beverage minimums, flexible cancellation policies, and our best-in-class free amenities for hotel guests.

MEETING SPACE

6 meeting rooms

- 4,700+ sq ft of flexible meeting room space
- Accommodates up to 180 in largest capacity space

ROOM TYPES

210 spacious guestrooms & two-room suites

- 66 deluxe king rooms
- 116 deluxe double queen rooms
- 28 deluxe two-room suites

AMENITIES



Free
Hot Breakfast



Free
5:30 Kickback®



Free
Wi-Fi

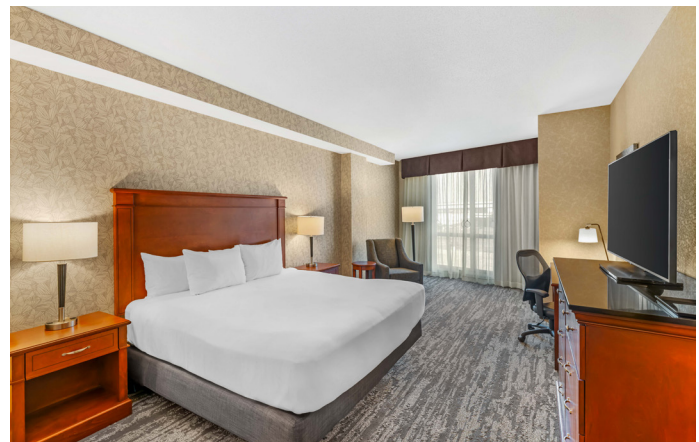
The Kitchen + Bar - *Open late, every night*
24-hour business & fitness centers
Indoor/outdoor pool & whirlpool
Guest market available
Guest laundry & same day dry cleaning (Mon - Fri) available
Microwave & refrigerator in every room
Drury Rewards® loyalty program

PARKING

Free parking during your stay

**FOR MORE INFORMATION ON PLANNING YOUR NEXT EVENT,
PLEASE CONTACT OUR SALES TEAM AT:**

E Groups@DruryHotels.com

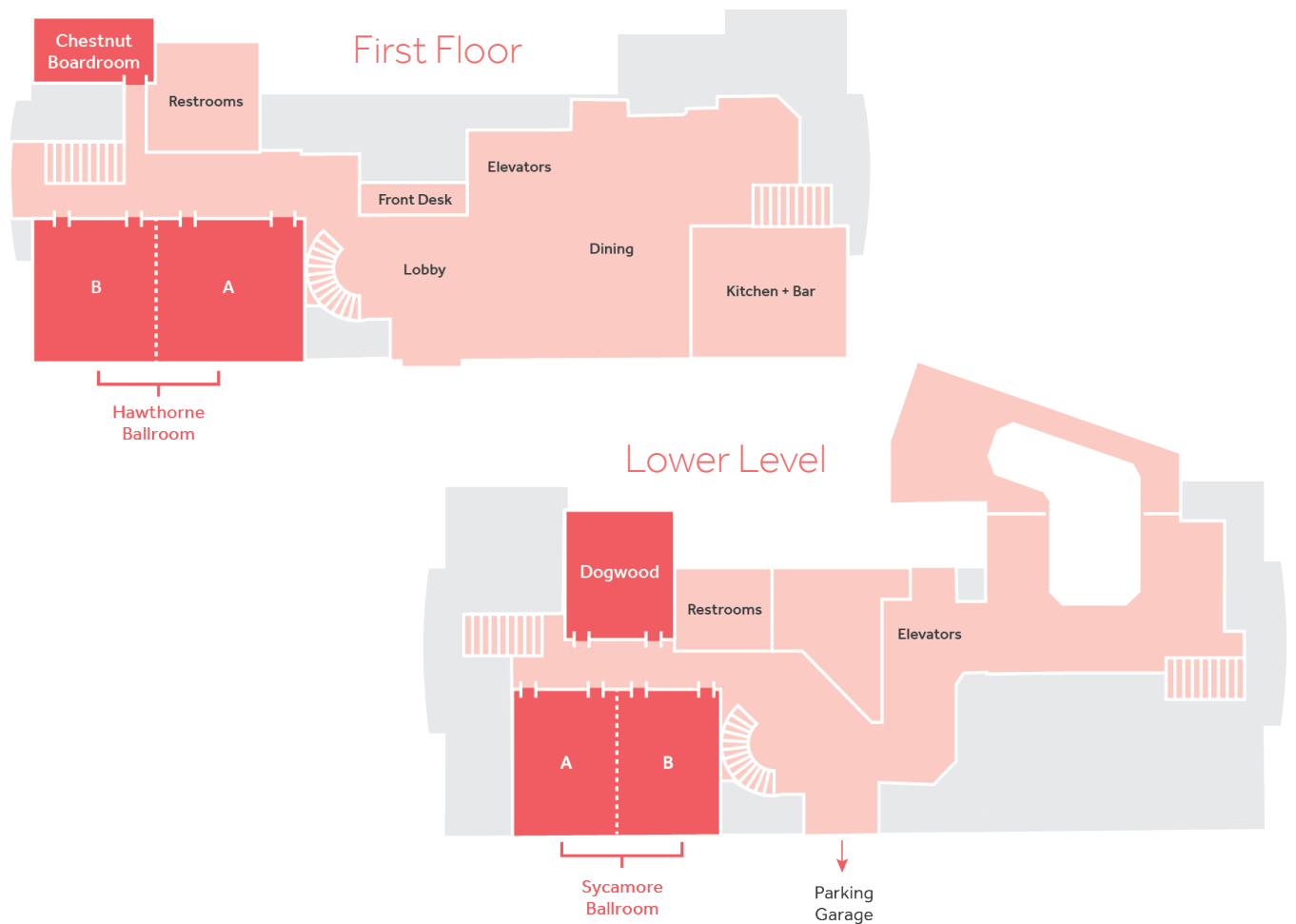


Drury Plaza Hotel St. Louis Brentwood

Capacities & Dimensions

We offer a variety of customizable set-up options to make your next event a success.

Room	Dimensions	Sq. Ft.	Banquet	Conference	Theater	Classroom	U-Shape
Hawthorne Ballroom	33' x 64'	2,112	120	45	160	141	35
Hawthorne A	33' x 36'	1,188	60	45	100	81	20
Hawthorne B	33' x 28'	924	60	--	60	60	15
Chestnut Boardroom	24' x 15'	360	--	14	--	--	--
Sycamore Ballroom	32' x 48'	1,536	80	--	100	64	30
Sycamore A	32' x 24'	768	40	--	50	32	15
Sycamore B	32' x 24'	768	40	--	50	32	15
Dogwood	30' x 24'	720	40	18	40	24	16



Drury Plaza Hotel St. Louis Brentwood

Break Packages*

We offer all-day beverage service, as well as AM or PM breaks, so your meeting never runs out of steam.

No food & beverage minimum is required.

Beverage Breaks

All-day service - will refresh as needed; 10 person minimum.

- Deluxe** **\$17.50 / person**
"Standard" and "Basic" packages (no carafes of iced tea), plus...
 - Premium Bottled Water/Sparkling Water
 - Assorted/Herbal Teas
- Standard** **\$14.50 / person**
"Basic" package, plus...
 - Assorted Soda Cans
 - Bottled Water
- Basic** **\$12.50 / person**
 - Regular/Decaf Coffee & Hot Tea
 - Carafes of Iced Tea and Infused Water

Recharge Food Breaks

Pricing valid with purchase of Beverage Break; 45 minute service; 10 person minimum; select items may have a per person upcharge as indicated (*).

- Sweet & Savory** **\$18 / person**
 Mix & match up to four (4) selections from our "Sweet" or "Savory" list.
Additional selections \$2 / person.
- Sweet Only** **\$12 / person**
 Mix & match two (2) selections from our "Sweet" list.
Additional selections \$2 / person.
- Savory Only** **\$12 / person**
 Mix & match two (2) selections from our "Savory" list.
Additional selections \$2 / person.

Other Food Options

- Drury's Hot Breakfast** **\$14 / person**
 A variety of hot food options, cereal, pastries, bagels and more.
 Served daily - 6:00 - 9:30 am Monday - Friday & 7:00 - 10:00 am Saturday & Sunday - in the main dining area only.
- Drury's 5:30 Kickback®** **\$16 / person**
 Rotating menu of hot food options, hearty soups, healthy salads and more.
 Served nightly - 5:30 - 7:00 pm - in the main dining area only.
Alcoholic beverages not included for non-hotel guests.

* Pricing is subject to change.

** Other options may be available upon request.

A La Carte

Add. Cost

- Coffee - 1.5 gal. (regular or decaf) \$56
- Energy Drinks (i.e. Red Bull) (ea) \$6
- Premium or Sparkling Bottled Water (ea) \$5
- Black & Herbal Tea with Hot Water (ea) \$3
- Soda/Water (by the can/bottle) (ea) \$3.50
- Cookies (by the dozen) \$30
- Brownies (by the dozen) \$30

Sweet Selections**

Add. Cost

- Greek Yogurt Cups \$3
- Ice Cream \$3
- Premium "Power" Bars \$3
- Candy Bars -
- Cookies -
- Brownies -
- Whole Fresh Fruit -
- Granola Bars/Cereal Bars -
- Mini Pastries -
- Danishes -
- Muffins -
- Rice Krispy Treats -
- Yogurt Cups -

Savory Selections**

Add. Cost

- Guacamole with Chips \$3
- Jerky \$3
- Hummus with Pita Chips \$3
- Trail Mix \$3
- Hard Boiled Eggs -
- Kettle Potato Chips -
- Smartfood® White Cheddar Popcorn -
- Rold Gold® Pretzels -
- Salsa with Chips -

Drury Plaza Hotel St. Louis Brentwood

Catering Options

Below is our preferred catering partner.

Callier's Catering

CalliersCatering.com

E kellyann@callierscatering.com

P 636-230-0019

Drury Plaza Hotel St. Louis Brentwood

Audio-Visual Equipment*

Drury Hotels proudly offers a selection of onsite audio-visual equipment available to rent. If your audio-visual request cannot be accommodated using our onsite equipment, our National Group Sales Coordinators can assist in obtaining the additional equipment for your meeting.

ITEM	PRICE
□ Wi-Fi	FREE
□ Charging Station	FREE
□ AV Support Package	
□ LCD Projector & Screen	\$250 / day
□ AV Cart**	\$600 / week
□ 2 Flipcharts with Markers	
□ LCD Projector	\$200
□ Wireless Lapel or Handheld Microphone	\$150
□ Polycom Speaker Phone	\$75
□ Flipchart with Easel & Markers	\$30
□ Powerstrips/Extension Cords	\$10 / per

*For the convenience of meeting planners, groups may bring their own audio visual equipment if desired. If the group requires equipment not carried by the hotel, equipment will be ordered from an approved local AV supplier and the customer will be billed the suppliers price through the hotel on the Banquet Event Order. AV equipment and pricing are subject to change. Please contact our Group Sales Department at 1-800-436-1169 for complete details.

Pricing shown is per day and does not include tax or service fee unless otherwise noted. All AV equipment comes with an extension cord and power strip.

** AV cart provided when projector is not ceiling mounted.